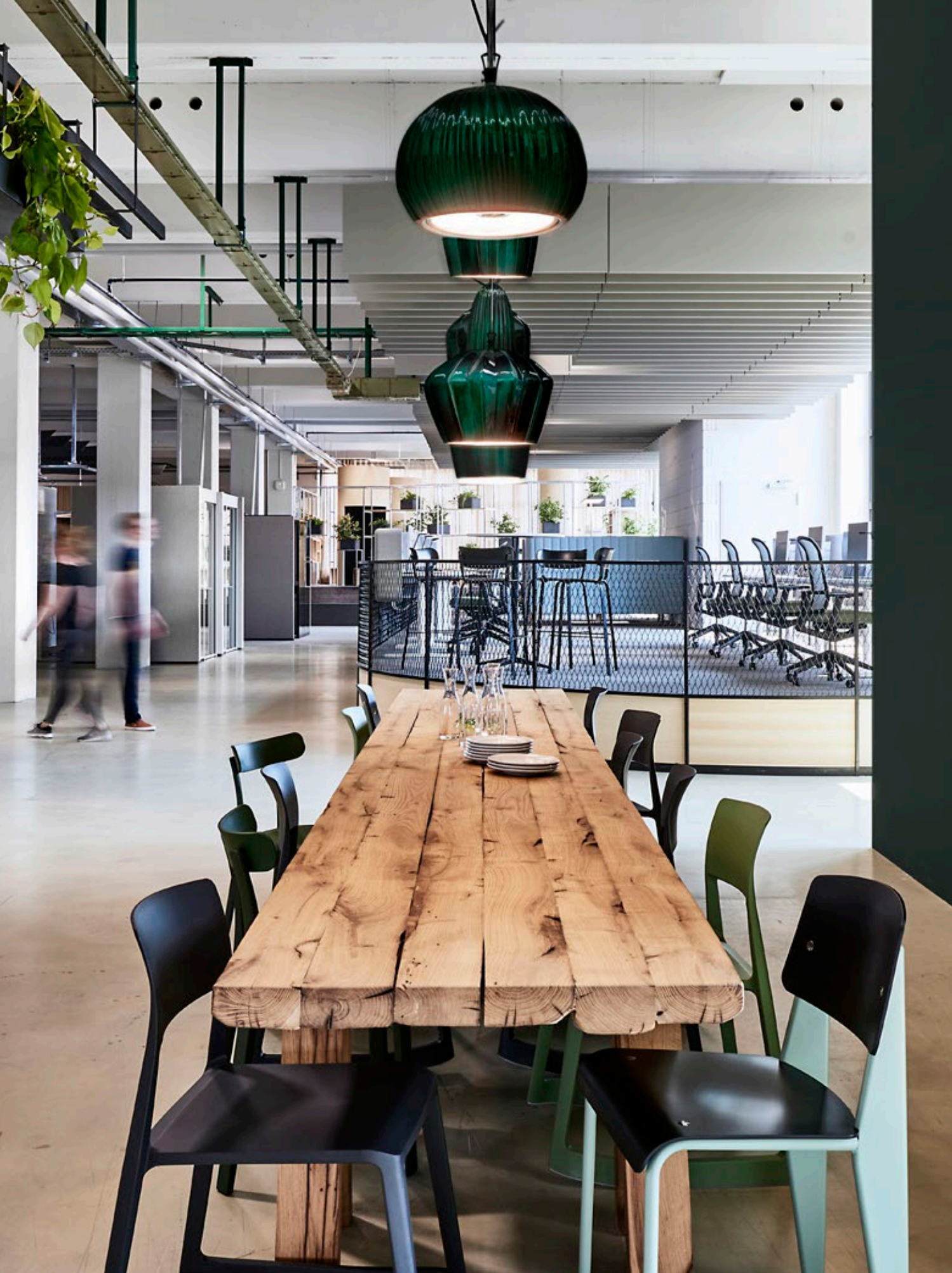


Based on the principles of New Work, BLOCHER PARTNERS combines spatial flexibility with proximity to nature for AOK

BELOW Meeting rooms with flexible wall elements can be used for private discussions or open workshops.







OPPOSITE PAGE In the open dining area between workstations, colleagues can meet to exchange ideas.

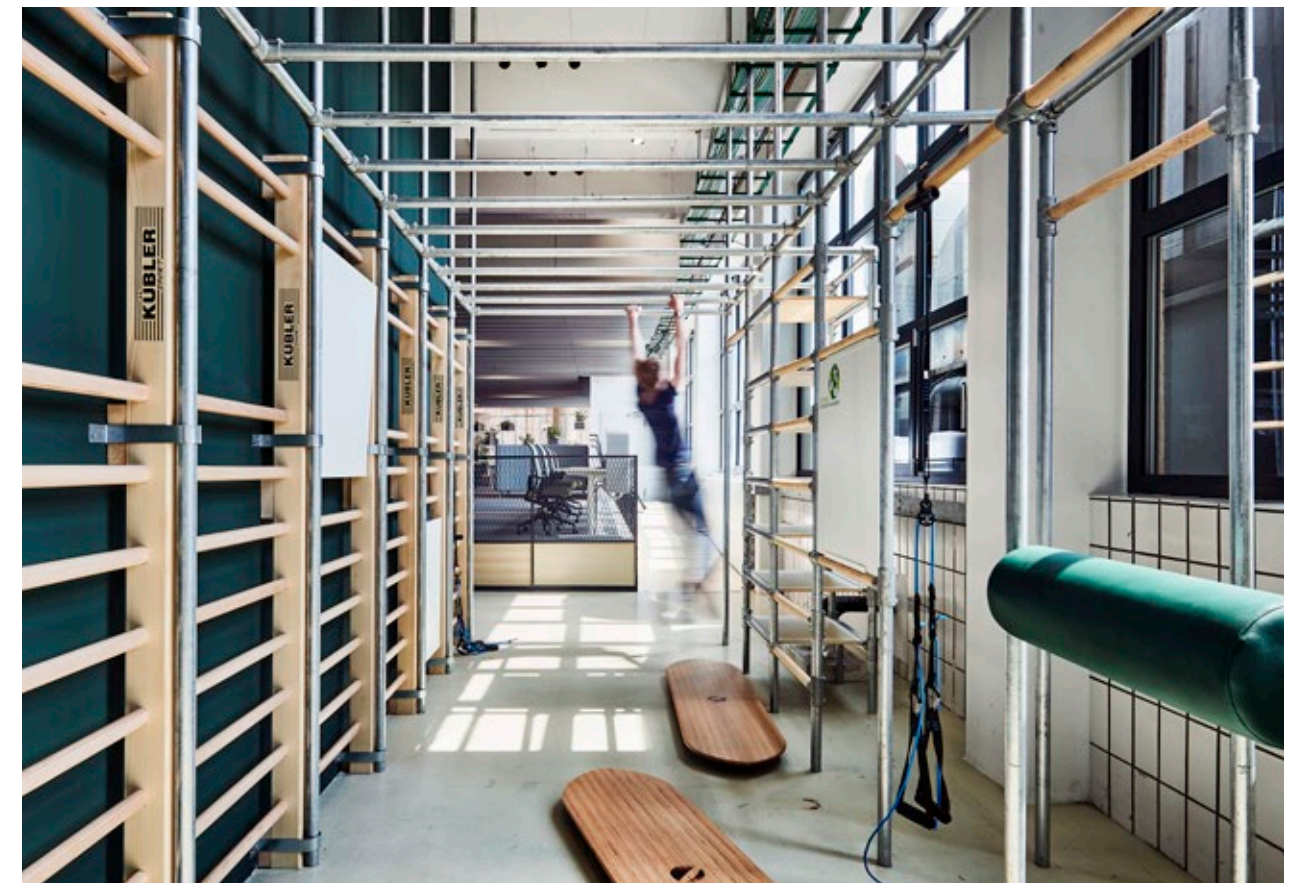
BELOW A gym zone complete with resistance equipment and overhead 'monkey bars' is dedicated to helping employees top up on energy.

NEXT SPREAD A mini carpeted conversation pit, flanked by benches and phone booth-like silos can accommodate solo calls, informal chats or larger gatherings, as required.

LUDWIGSBURG — The office for health insurance provider AOK Baden-Württemberg was designed in keeping with the company's tagline: *gesundnah*, meaning 'to your health'. Rooted in tradition but growing into the future, AOK's work environment needed to be healthy, forward-looking and employee-friendly.

Designed by German studio blocher partners, the 1500-m<sup>2</sup> office accommodates multiple ways of working via a mix of open zones, permanent workstations and private offices, as well as dining and relaxation areas. The design team enlarged windows to give workers plenty of natural light and created a forest-like retreat surrounded by dense greenery. They chose objects, materials, colours and shapes that recall the natural world – green carpets and pendant lights, hanging plants, wooden wall cladding and cardboard tubing – all of which promote both wellbeing and productivity.

'It is in the office space that creativity, concentration and dialogue come together,' the designers suggest. Here, the interior design anticipates the intersection of communication, exchange and privacy, always with the human being at the centre. This mixture of openness, intimacy and team space enables employees to structure their work anew each day.

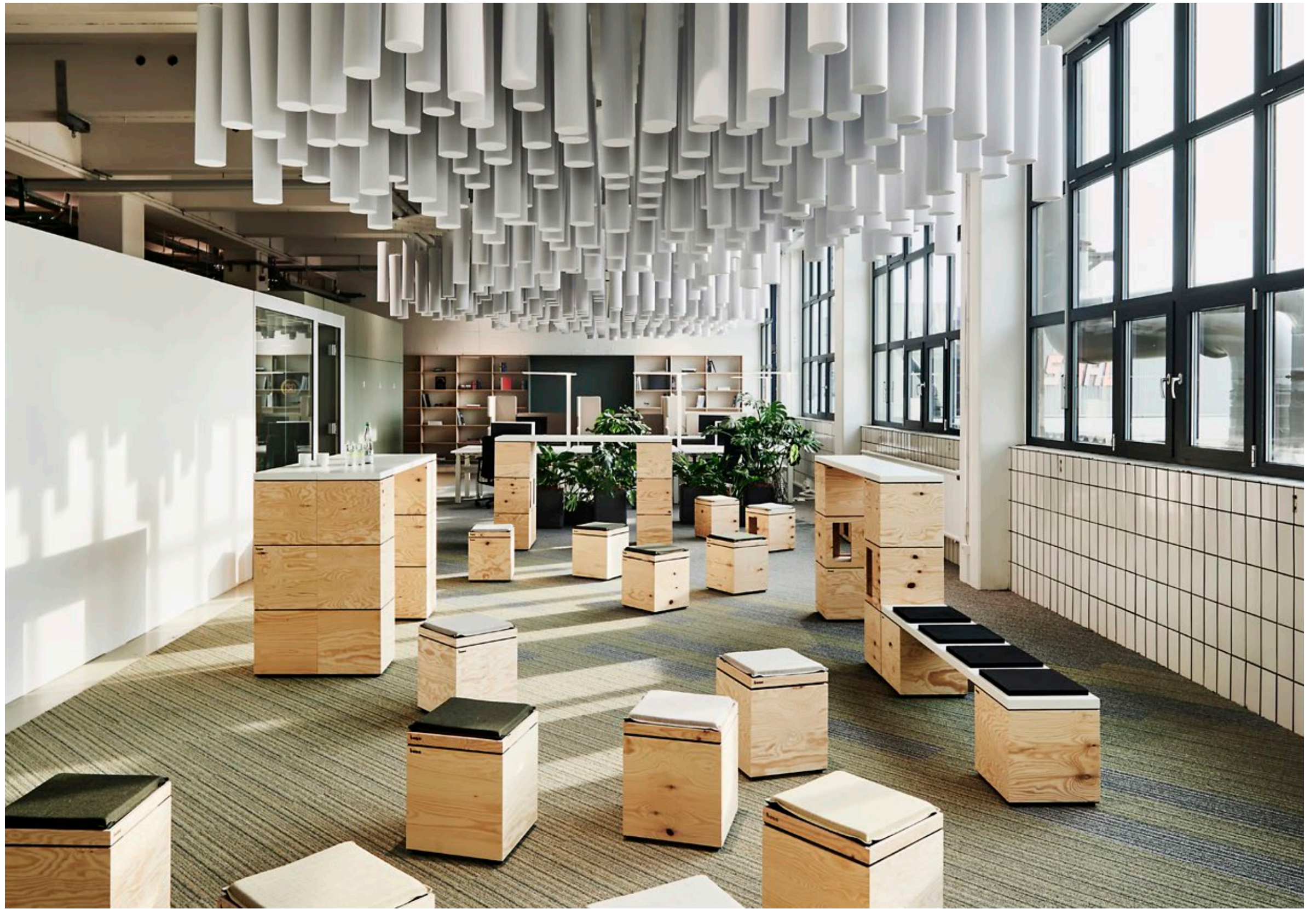








The design anticipates the intersection of communication, exchange and privacy, always with the human being at the centre



RIGHT Foreseen as a test space for trying out new work environments, the project house is a work in progress.